



INFORMATION FOR RECOGNITION OF DISEASE-FREE STATUS FOR CATEGORY C DISEASES OF AQUATIC ANIMALS IN ACCORDANCE WITH CHAPTER 4 OF PART II OF [REGULATION \(EU\) 2020/689](#) AND ARTICLE 11 OF COMMISSION IMPLEMENTING [REGULATION \(EU\) 2020/2002](#)

Requirements and information	Information, explanation and justification
Identification of the programme	
1. Date of submission	29 November 2021
2. Name of Member State and details of contact point	Denmark Danish Veterinary and Food Administration (DVFA), Stationsparken 31-33, 2600 Glostrup. Phone: +45 72276900. E-mail: 14@fvst.dk
3. Name of Category C disease	IHN – Infectious Haematopoietic Necrosis
4. Identification of the grounds for recognition of disease-free status	Continued IHN free status of a historically free compartment under surveillance conducted in accordance with Annex VI, part II. (d) Completion of an eradication programme
5. Territorial scope of the eradication programme	(b) Compartment <u>Address:</u> Slagterivej 6 7200 Grindsted Denmark CHR 126012 <u>Coordinates:</u> Latitude: 55.76 Longitude: 8.94

	<p><u>Farm details:</u> Farm production: Hatchery/Nursery Water supply: Water plant Discharge of effluents: Municipal water treatment</p> <p><u>Farm productivity:</u> Nursery: 97,198 (kg/y)</p> <p><u>Description of compartment:</u> The compartment consist of a building with five different divisions. Each division has its own water and filtration system. Each division can be isolated from the rest, if needed.</p>
<p>6. Dependency of compartments</p>	
<p>(a): Independent compartments as referred to in point (a) of Article 73(2) of Regulation (EU) 2020/689</p>	
<p>(i) The water is supplied through a water treatment plant which inactivates the relevant pathogen or that the water is supplied directly from a well, a borehole or a spring</p>	<p>See (ii).</p>
<p>(ii) Where such water originates from a source outside the establishment, it is channelled directly to it by means which afford appropriate protection from infection</p>	<p>The water supply comes from municipal water supply systems (water treatment plant)</p>
<p>(iii) There are natural or artificial barriers that prevent aquatic animals from entering each establishment in the compartment from surrounding natural waters</p>	<p>Inlet: see (ii) Outlet: The water is led to the compartments own treatment plants through a piping system with a non-return valve. Another part of the outlet water is led through a seepage plant. There is no contact with surrounding natural waters.</p>

<p>(iv) Where appropriate, the establishments in the compartment are protected against flooding and infiltration of water from surrounding natural waters</p>	<p>The compartment consists of a closed off building. There are no risk of flooding or infiltration of water from surrounding natural waters.</p>
---	---

7. Statement

Statement confirming that the relevant general criteria in accordance with point (a) of Article 73(1) of that Regulation for aquatic compartments, are complied with since 1 April 2016 or longer

- (i) The territorial scope complies with point (c) of Article 47(2) of Regulation (EU) 2020/689;
- (ii) The surveillance for the disease complies with the requirements laid down in Articles 3(2), 4 and 6 to 9 of Regulation (EU) 2020/689; Until 21 April 2021 Denmark had Danish legislation based on the Implementing decision (EU) 2015/1554 (referring to Council Directive 2006/88/EC), and respectively Regulation 2017/625 and Regulation 2004/854. Furthermore, Denmark has an executive order no. 1324 of 26/11/2015, replaced by executive order no. 1451 of 12/12/2019 according to Council Directive 2006/88/EC.
- (iii) Operators comply with obligations as regards biosecurity measures as laid down in Article 10 of Regulation (EU) 2016/429; and Danish executive order no. 965 of 18/07/2013.
- (iv) Operators comply with the disease control measures relevant to the disease in the event of a suspicion or confirmation. Delegated Regulation 2020/689 and Danish executive order no. 1324 of 26/11/2015, replaced by executive order no. 1451 of 12/12/2019 according to Council Directive 2006/88/EC.
- (v) The establishment comprising the compartment was approved for brood stock in 2018. The establishment was approved according to Danish executive order no. 965 of 18/07/2013 since it has been applied.

	<p>(vi) Traceability of the animals from the targeted animal population is ensured.</p> <p>(vii) When moved, the animals from the targeted animal population or products thereof complied with the animal health requirements for movement within the Union or for entry into the Union of those animals and products thereof, and Danish executive order no. 965 of 18/07/2013.</p>
--	--

11. When the grounds for recognition of disease-free status is based on the completion of an eradication programme, for each year of the programme, information must be supplied concerning:

(a) the aquaculture establishments and where relevant, the sampling points in the wild in the zone/compartiment:

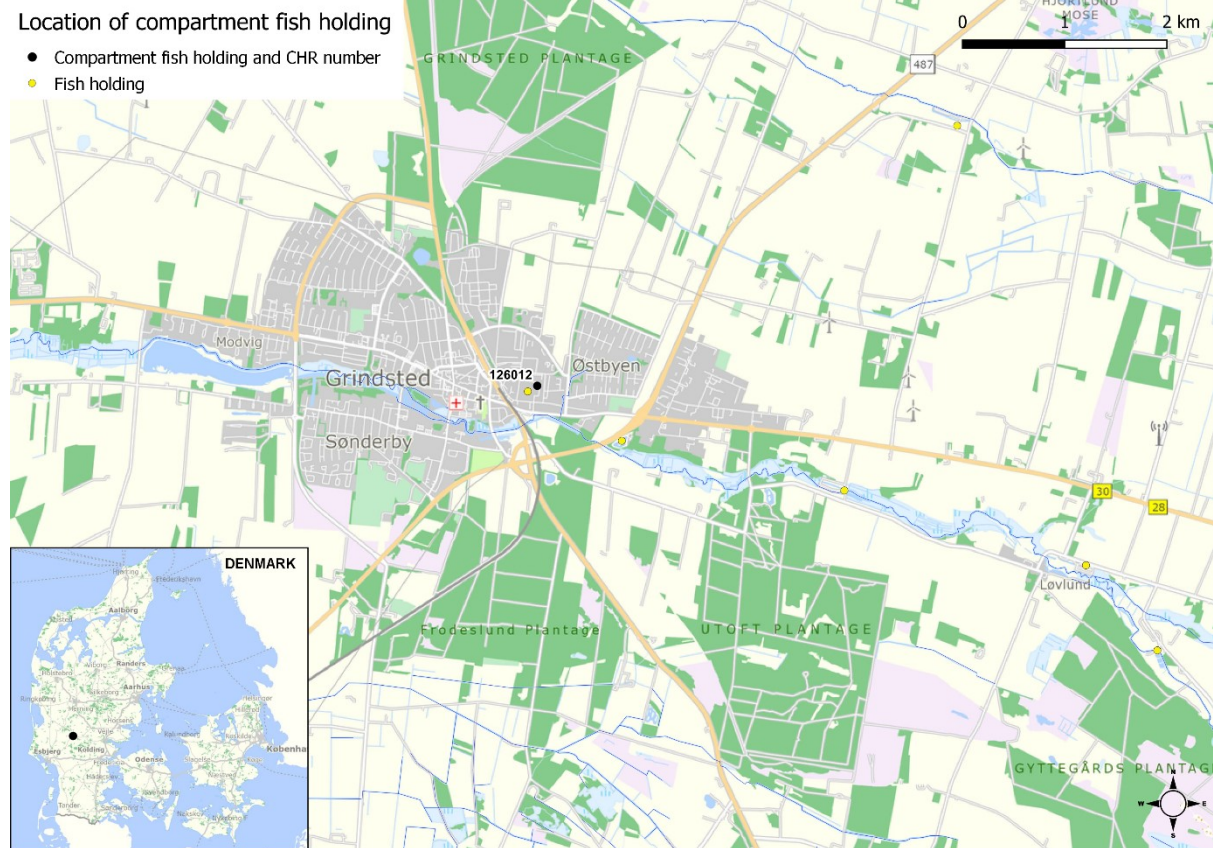
<p>(i) Number of approved aquaculture establishments in the programme</p>	<p>There is one approved aquaculture establishment in the compartment.</p>
<p>(ii) Maps showing approved and registered aquaculture establishments, and where relevant, sampling points in the wild</p>	<p>See map of compartment.</p>
<p>(iii) Number of aquaculture establishments, and where relevant, sampling points in the wild, out of the total number of aquaculture establishments and sampling points in the wild, which are not infected</p>	<p>One out of one aquaculture establishment in the compartment is not infected.</p>
<p>(iv) Number of aquaculture establishments, and where relevant, sampling points in the wild, out of the total number of aquaculture establishments and sampling points in the wild, with confirmed cases</p>	<p>The establishment has no confirmed cases.</p>

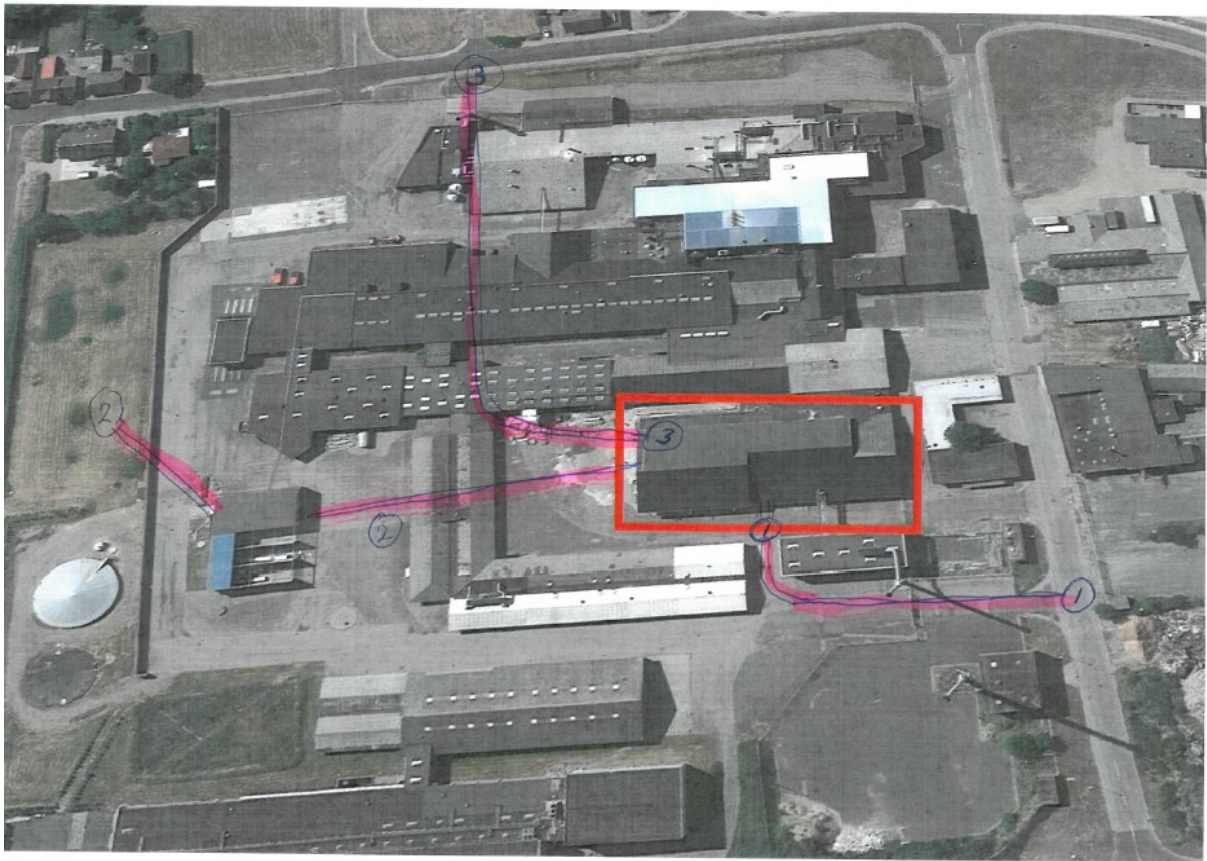
<p>(v) Number of new aquaculture establishments, and where relevant, sampling points in the wild, out of the total number of aquaculture establishments and sampling points in the wild, with confirmed cases</p>	<p>There are no new aquaculture establishments in the compartment with confirmed cases.</p>
<p>(b) animal health visits and sampling which have been completed</p>	
<p>(i) Number of health visits per approved and where relevant, per registered aquaculture establishment</p>	<p>See table. Since 21 April 2021, the establishment has been subject to health visits according to Delegated Regulation 2020/689, annex VI, part II, Chapter 1, section 4 and 5. Until 21 April 2021, the establishment has been subject to health visits and sampling according to executive order no. 1324 of 26/11/2015, replaced by executive order no. 1451 of 12/12/2019 (according to Council directive 2006/88/EC).</p>
<p>(ii) Number of samplings per approved, and where relevant, per registered aquaculture establishment, or samplings in wild populations</p>	
<p>(iii) Number of animals sampled at each sampling event</p>	
<p>(iv) Species sampled</p>	
<p>(v) Results from each laboratory examination (positive/ negative for the pathogen in question)</p>	
<p>(vi) Results from each clinical inspection</p>	
<p>(vii) Water temperature at the time of sampling</p>	

Table of animal health visits and sampling completed since 1 April 2016

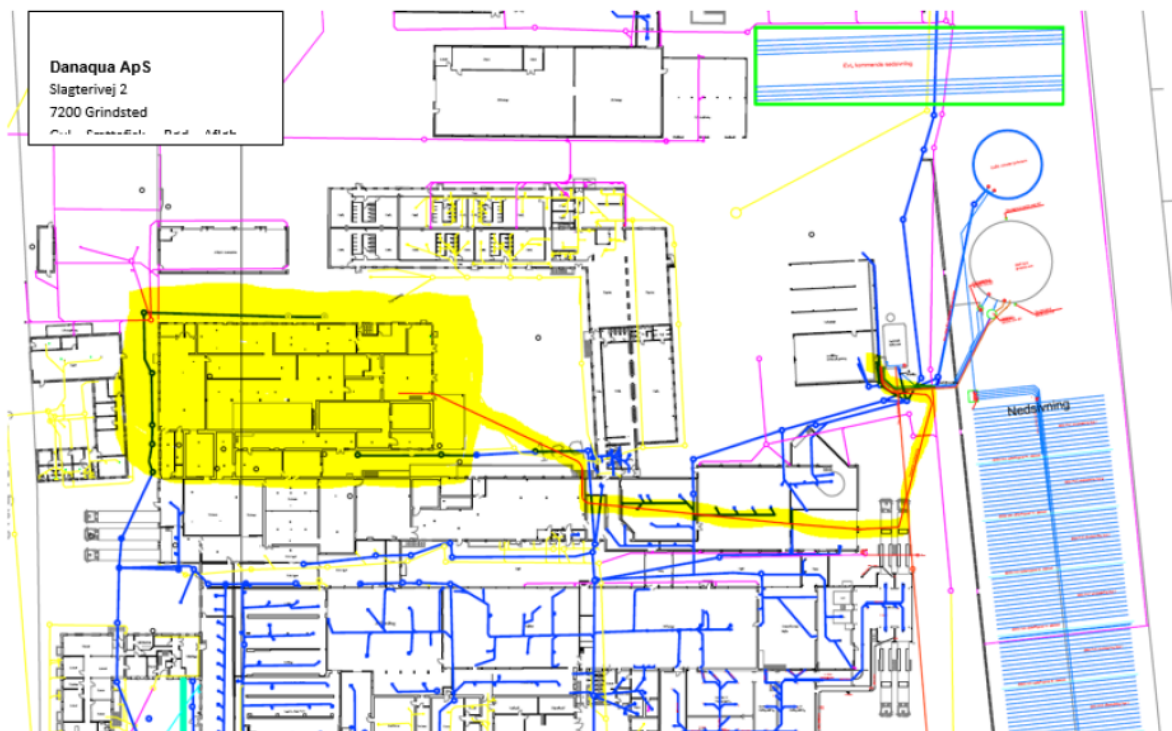
Health visits	Samplings	Animals tested per sampling	Species sampled	Result of laboratory analysis	Result of clinical inspection	Water temperature at sampling
One every 2 years	One every 2 years	30	Rainbow trout / <i>Onchorhynchus mykiss</i>	Negative	No clinical signs of IHN	14 °C or below

Map of compartment and location in Denmark:





Streg 1 er kommunalt byvand (indløb): No. 1 municipal water, inlet
 Streg 2 er nedsivning til eget nedsivningsfelt: Seepage plant
 Streg 3 er udledning til kommunalt rensningsanlæg: No. 3 outlet to municipal treatment plant



Yellow marking: The premises of the compartment